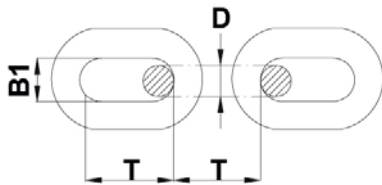


## STUDLESS CHAINS



MSM offers studless and stud-link anchor chains grade 2 and grade 3, and stud-link anchor chains with different available finishings: self-colour, black, hot-dip galvanized and grade 80.

We make due calculations to provide the highest quality and resistance in any type of mooring, either for use in the sea, on the dock or on the dockyard.

At customer request, we deliver Test Certificates from the most reputable Naval Classification Societies, such as Lloyd's Register, Bureau Veritas, etc.

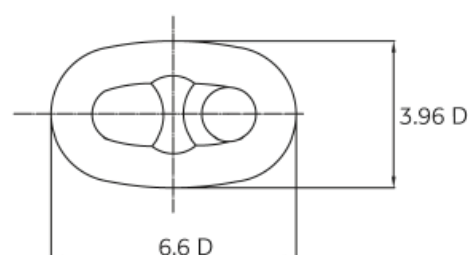
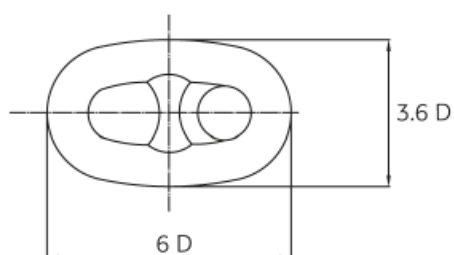
### STUDLESS CHAIN GRADE 2

Chain diameter (D)		Inside length (T) in mm	Inside width (B1) in mm	Weight per m in kg	Breaking load in kN	Test load in kN
Inches	mm					
5/8	16	64	25.6	5.2	132.3	66.2
45/64	18	72	28.8	6.5	157.78	78.89
25/32	20	80	32	8.2	204.8	102.4
7/8	22	88	35.2	10	250.9	125.4
15/16	24	96	38.4	12.5	298.9	149.9
1	26	104	41.6	14	350.8	175.4
1 1/8	28	112	44.8	16.5	406.7	203.8
1 3/16	30	120	48	19	467.5	234.2
1 1/4	32	128	51.2	21.5	531.2	265.6
1 5/16	34	136	54.4	24	599.8	299.9
1 7/16	36	144	57.6	26	672.3	336.1
1 1/2	38	152	60.8	29.5	748.7	374.4
29/16	40	160	64	33	829.1	414.5
2 3/4	42	168	67.2	37	915.3	457.7
1 3/4	44	176	70.4	41	999.6	502.7
1 13/16	46	184	73.6	45	1,097.6	548.8
1 7/8	48	192	76.8	49.5	1,195.6	597.8
2	50	200	80	53.5	1,239.6	648.8

Other types of studless chains available under request.



# STUD-LINK ANCHOR CHAINS



STUD-LINK ANCHOR CHAIN						
Chain diameter		Grade U2		Grade U3		Approx. min. weight per metre
Inches	mm	Proof load kN	Breaking load kN	Proof load kN	Breaking load kN	
5/8	16	107	150			5.5
11/16	17,5	127	179			7.2
3/4	19	150	211			8.6
7/8	22	200	280	280	401	11.8
15/16	24	237	332	332	476	13.5
1	26	278	389	389	556	15.7
1 3/16	30	368	514	514	735	20.5
1 1/4	32	417	583	583	833	23.1
1 5/16	34	468	655	655	937	25.9
1 7/16	36	523	732	732	1,050	29.1
1 9/16	40	640	896	896	1,280	37.6
2	50	981	1,370	1,370	1,960	56.2
2 3/8	60	1,380	1,940	1,940	2,770	81.8
2 3/4	70	1,840	2,580	2,580	3,690	109.5
3 9/16	90	2,920	4,090	4,090	5,840	180.9
3 15/16	100	3,530	4,940	4,940	7,060	223.4
4 3/4	120	4,850	6,810	6,810	9,720	322.3
5 1/8	130	5,570	7,800	7,800	11,140	374.5

Other types of stud-link chains available under request.