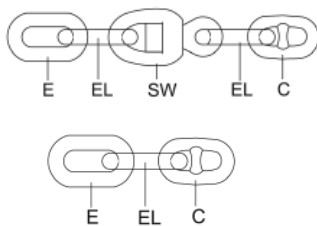




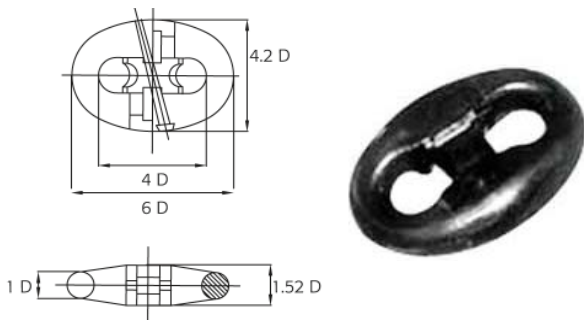
## LINKS



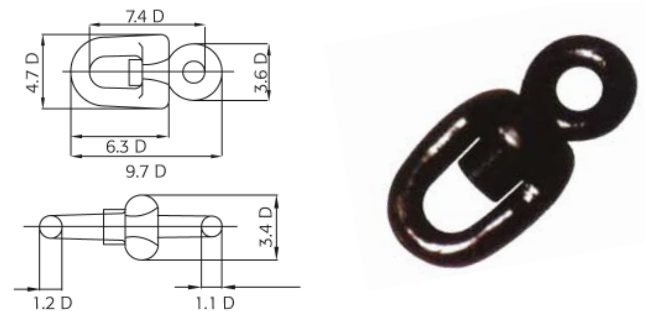
In MSM, under our premise of offering an integrate service, we have all kinds of shackles: forelock shackles, swivel shackles and anchors, for any type of mooring, either for use at sea, on the dock or on the dockyard.

In addition, we can supply these items in different qualities and finishings.

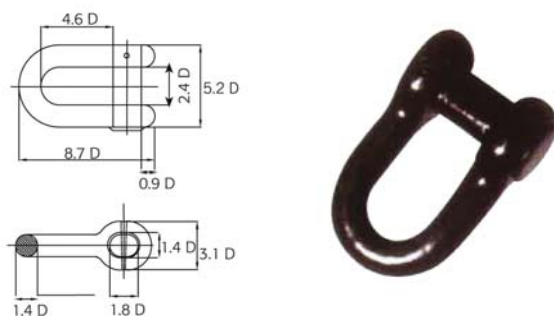
## KENTER K-S SHACKLE



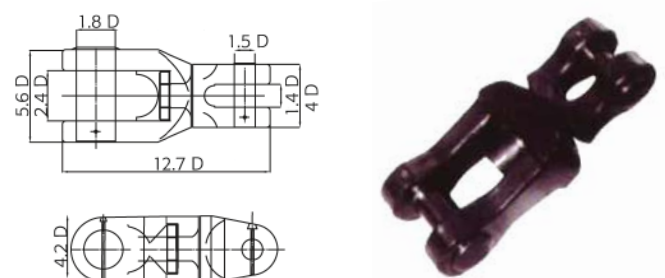
## SWIVEL SW



## ANCHOR SHACKLE TYPE "D" E.S.



## ANCHOR SWIVEL SHACKLE TYPE A. SW. S.



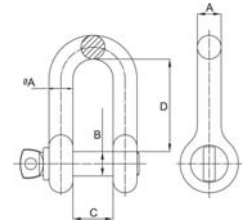
MSM

# SHACKLES

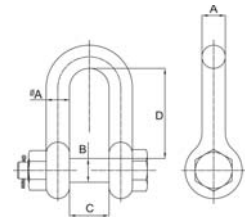


Specifications subject to change without previous notice.

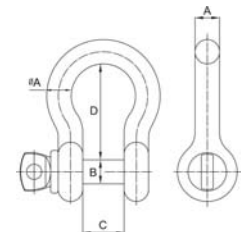
DEE SHACKLE					
DIMENSIONS (mm)				WEIGHT kg	S.W.L. kg
A	B	C	D		
6	6	12	24	0.04	100
8	8	16	32	0.07	200
10	10	20	40	0.14	320
12	12	25	48	0.25	510
16	16	32	60	0.55	790
20	20	38	74	0.92	1,100
22	22	44	85	1.38	1,500
25	25	51	97	2.25	2,050
28	28	56	107	3.16	3,000



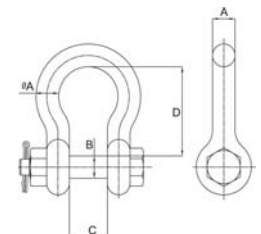
G2150 SHACKLE					
DIMENSIONS (mm)				WEIGHT kg	S.W.L. kg
A	B	C	D		
10	12	16	31	0.18	1,000
12	14	20	41	0.35	2,000
16	20	26	51	0.68	3,250
22	25	37	74	1.73	6,500
25	28	42	82	2.51	8,500
28	32	46	89	3.44	9,500
32	35	51	94	4.89	12,000
40	45	60	127	8.62	17,000
45	50	73	150	14.22	25,000



BOW SHACKLE (OMEGA)					
DIMENSIONS (mm)				WEIGHT kg	S.W.L. kg
A	B	C	D		
6	6	12	24	0.04	100
8	8	16	32	0.07	200
10	10	20	33	0.14	320
12	12	25	48	0.26	510
16	16	32	60	0.55	790
20	20	38	74	1.10	1,100
22	22	44	85	1.50	1,500
25	25	51	97	2.25	2,050
28	28	56	107	3.30	3,000



G2130 SHACKLE					
DIMENSIONS (mm)				WEIGHT kg	S.W.L. kg
A	B	C	D		
10	12	16	36	0.18	1,000
12	14	20	48	0.38	2,000
16	20	26	60	0.72	3,250
22	25	37	83	1.78	6,500
25	28	42	95	2.77	8,500
28	32	46	108	3.74	9,500
32	35	51	114	5.30	12,000
40	45	60	146	9.42	17,000
45	50	73	178	15.36	25,000



Other types of shackles available under request.



**MEDITERRÁNEO SEÑALES MARÍTIMAS, S.L.L.**  
 mesemar@mesemar.com • www.mesemar.com

