



Mediterráneo Señales Marítimas has a wide range of photocells available for marine aids to navigation, which can be adapted to many flashing or rotating beacons to control their switching-on.

These devices are photoelectric cells that act as daylight control sensors, allowing the equipment switching to day or night status.

MSM photocells are one more complement to the proper operation of our beacons. They are also compatible with a good number of other beacons in the market.

Thanks to its encapsulation, they are highly resistant to the harshest marine conditions of humidity and salinity.

FEATURES

- ✓ Wide range of models compatible with a good number of beacons.
- ✓ Sensor by LDR photoresistance or photodiode, depending on the model.
- ✓ Sensor encapsulated in resin for maximum protection.
- ✓ High sensitivity to low lighting levels.
- ✓ Long life.
- ✓ Sensitivity adjustment in lux in MF flashers by PC.



PHOTOCELLS



Specifications subject to change without previous notice.

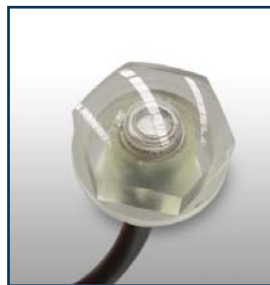
PHOTORESISTANCE	THREAD	SENSOR	CABLE
FR 13	PG 13.5	LDR 12 k	2 x 300 mm
FR 16	PG 16	LDR 12 k	2 x 300 mm
FR 20-F	M 20 x 1.5	LDR 12 k	2 x 300 mm
FR 20-G	M 20 x 2.5	LDR 12 k	2 x 300 mm
FR 25	M 25 x 1.5	LDR 12 k	2 x 300 mm
FR 34	NPT 3/4	LDR 12 k	2 x 300 mm
FR 12	M 12	LDR 12 k	2P connector

PHOTOSENSORS	THREAD	SENSOR	CABLE
FH 16	PG 16	Photodiode	3 x 300 mm
FH 20-F	M 20 x 1.5	Photodiode	3 x 300 mm
FH 20-G	M 20 x 2.5	Photodiode	3 x 300 mm
FH 25	M 25 x 1.5	Photodiode	3 x 300 mm
FH 34	NPT 3/4	Photodiode	3 x 300 mm

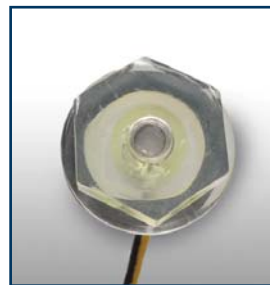
Options
Metallic cap.
ATEX version.
Special caps for lamp control.
IP 67 wall-mounting box.



FR 20 ATEX version



FR 20



FH 34



FH 25



MEDITERRÁNEO SEÑALES MARÍTIMAS, S.L.L.
 mesemar@mesemar.com • www.mesemar.com

